



Company Guide

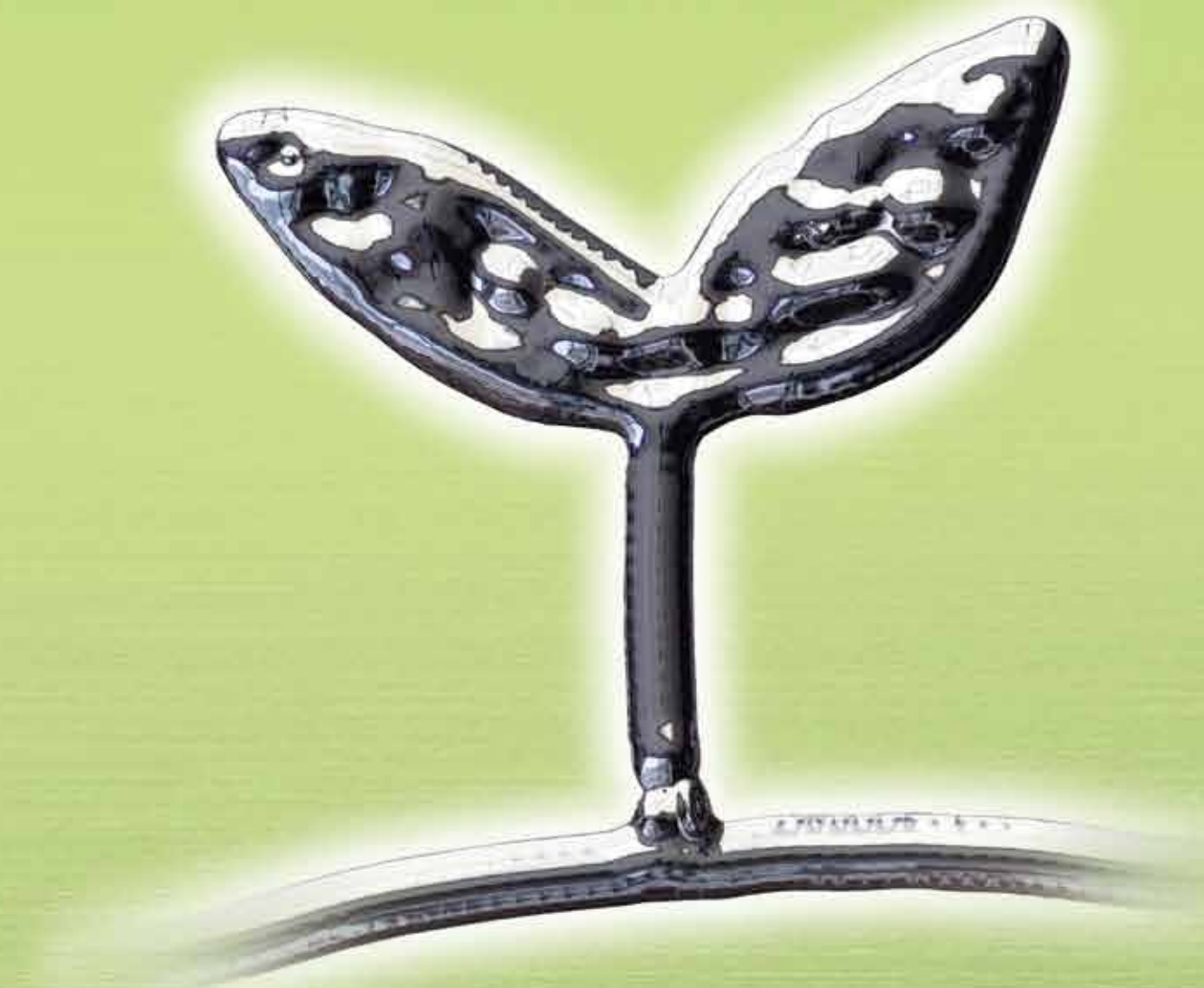


METAL DO co.,Ltd.

3-5-6 Kyomachibori, Nishi-ku, Osaka 550-0003

Phone:06-6448-5151 Fax:06-6448-5757

URL <http://www.raremetal.co.jp/>



METAL DO co.,Ltd.

In our daily lives we enjoy the benefits of civilization.
In order to create an even greater abundance,
modern society is embracing the various problems it must face.
We are tackling these problems through our business activities,
accepting our responsibilities with sincerity and striving day in
and day out to become a company that can make a great contribution to society.

我们在日常生活中，每天都在享受着文明的恩惠。

为了使文明更加丰富多彩，现代社会却不得不承担着众多的问题。

敝公司真诚地接受这个事实，并力图通过业务活动来解决这些问题，为了使企业能够多为社会做贡献，我们在日以继夜地努力着。

Foreword

Environmental Policy 环境方针

To effectively implement environmental preservation measures in compliance with the ISO 14001:2004 amendments, METAL DO is announcing the implementation of the revised environmental policy below, created to enable the revision and maintenance of our environmental management system.

株式会社 METAL DO 为了按照 ISO14001:2004 的修订版有效地推进环保工作，修订和维护环境管理体系，将环境方针修改如下，并声明将遵守这一方针。

Basic Principle 基本理念

METAL DO's corporate philosophy is to give back to the community by making effective use of resources. Driven by this idea, the Company's business activities will help create a sustainable recycling-driven world in tune with the global environment and with minimal environmental impact.

株式会社 METAL DO 基于“有效利用资源，为社会作出贡献”的经营理念，以形成与地球环境协调、共存的可持续发展的循环型社会为目标推进事业活动。

Basic Policy 基本方针

Our basic policy is tailored to the characteristics of our main business areas—selling rare metals and ferro alloys, and collecting, reclaiming and selling raw material scrap. It consists of the measures below, which are designed to prevent environmental pollution and help preserve the global environment.

我公司以稀有金属和铁合金的销售和原料废料的回收、再生、销售为主要业务，实施下面的措施，努力预防环境污染，保护地球环境。

1. Save resources and energy.
推进节省资源、节省能源。
2. Reduce waste; recycle.
努力削减废物，推进再利用。
3. Make effective use of recycled resources.
有效利用再生资源。
4. Uphold relevant laws and regulations, industry guidelines the Company is a party to, and agreements with local residents and governments.
遵守相关法规法制和我公司同意的业界指针、与近邻和自治体的协定等。
5. Set environmental goals and targets; create and implement programs; make ongoing improvements to the environmental management system.
设定环境目的和目标，制定并推进计划，持续改进环境管理体系。



President Toshihiko Yamatsura

Since we started metal recycling business in 1963, it has been 50years and this year is 35th years since we established the company, Metal Do Co., Ltd. For 35 years we have been engaged in the sales of nonferrous metals and recycling for all of rare metals. Even now, we are constantly and promoting new recycling systems and more effective uses of resources not only domestics but also all over the world.

In addition, we recognize that "environmental issue and compliance" should be more significant for social responsibility.

Nowadays, dramatic changes on political and economy lead to the instability and influences on demand and supply of primary resources and recyclable resources market.

We wish to seize and to make use of those changes to archive our aims. Utilization of information and products as our keynote, we will make more effort in the future recycle industry.

From May 2013, I will become the 3rd generation of the Managing Director of Metal Do Co., Ltd. I would continue and devise our business with customers' support and advice.

本公司从1963年开始从事金属回收,到现在已有50年的经验。今年 METAL DO CO.,LTD. 成立第35年。我们主要从事非铁金属、稀有金属和特殊金属的买卖。

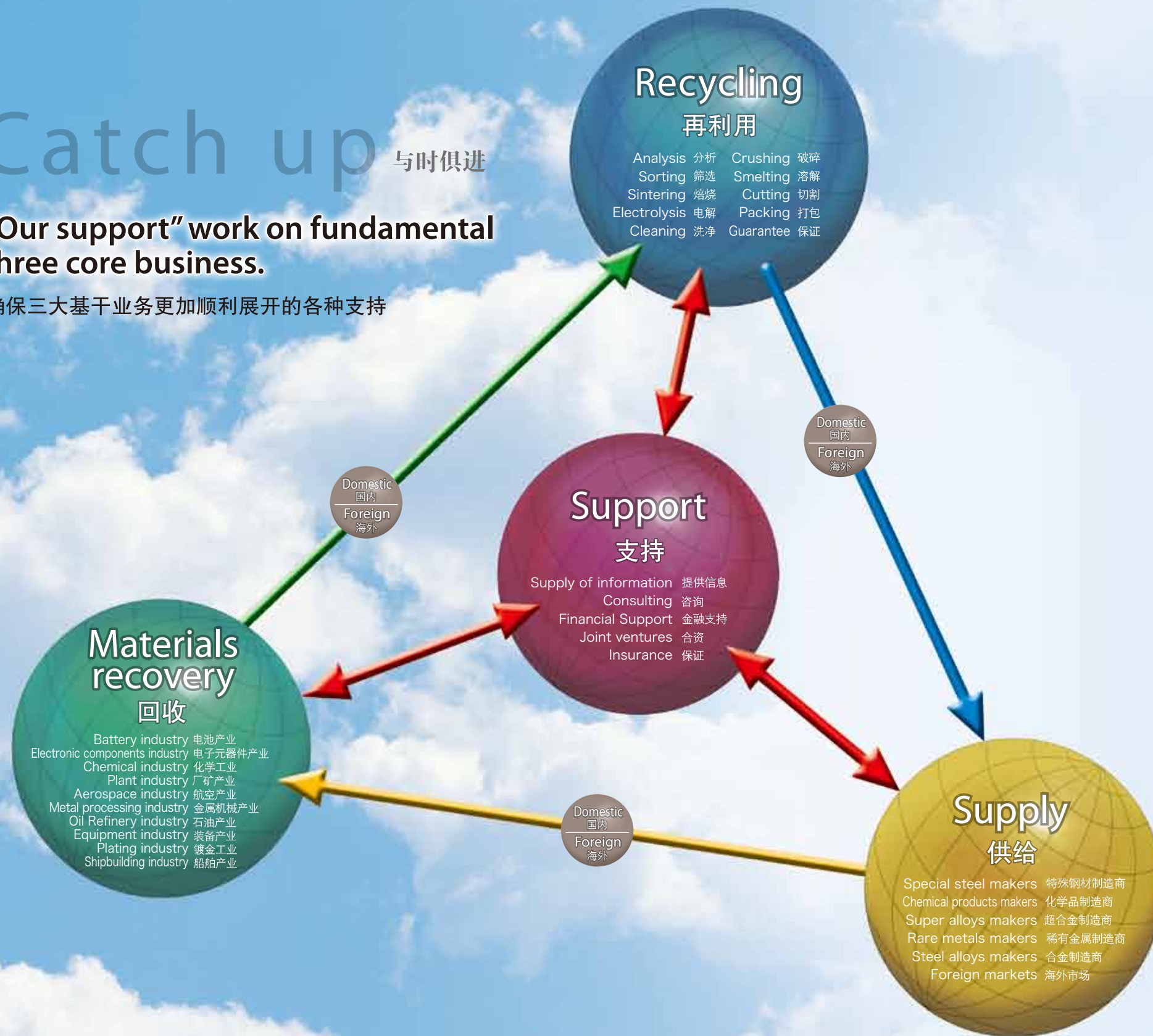
现在,我们仍在扩展国内外资源回收的业务,我们强调资源在社会和经济层面上有效利用的重要性,同时,我们亦重视「对环境问题和承诺」社会责任的重要性。近期,因为政治和经济形势的变化因素,而导致原料和再生资源的供求不稳定。本公司不仅希望掌握有关变化,提供顺应时间的情报和商品,亦希望为业界未来努力。

由2013年5月开始,本人将成为本公司的第三任新任董事总经理。本人会继续全心全意对业界会作出贡献,希望大家继续支持我们 METAL DO CO.,LTD.

Catch up 与时俱进

“Our support” work on fundamental three core business.

确保三大基干业务更加顺利展开的各种支持



Service 服务



Analysis and Evaluation 分析和评估

Provide us with a sample of the materials you would like to sell and tell us the total weight, and we can provide you with either our own analysis results or results from a general analysis laboratory. We can also give you our current evaluation (i.e., purchase price) based on the analysis.

如能提供样品、数量等，便能告知我公司的分析值或官方分析机构的分析值，并告知此时的评估（买价）。



Explanation of Samples 商品说明

We can meet your request immediately and provide you with information on how to handle the products you submit to us.

提供出示商品的详细说明和注意事项，迅速答复提问等。



Related Information 相关信息

Ask us about trends and future forecasts. We can also advise you on the development methodology for any samples that you submit for evaluation.

提供有关出示商品的动向和预测以及开发手法等信息。



License 许可

Our advisory services provide you with information regarding pertinent legislation and permit requirements for handling certain items, or we can act as your proxy in fulfilling these requirements.

对处理商品所需的许可认可和资格等提供建议和代理。

Other Services 其它服务

Feel free to ask us about any other services or propositions concerning metal recycling, reuse or reduction.

对金属再循环、再利用、减少废物进行提议并答复提问。

Overseas client countries 海外交易国



America 美国	Netherlands 荷兰	Turkey 土耳其	Malaysia 马来西亚	Hong Kong 香港
Canada 加拿大	Belgium 比利时	Israel 以色列	Singapore 新加坡	Korea 韩国
Australia 澳大利亚	Austria 奥地利	Estonia 爱沙尼亚	Indonesia 印尼	Vietnam 越南
England 英国	Russia 俄罗斯	Czech Republic 捷克	Philippines 菲律宾	
Germany 德国	Finland 芬兰	UAE 阿拉伯联合酋长国	Thailand 泰国	
France 法国	Norway 挪威	Brazil 巴西	China 中国	
Spain 西班牙	Ukraine 乌克兰	India 印度	Taiwan 台湾	



Workflow 工作流程

Working with confidence in the know-how through our experience we have established for more than 35 years.

我们对自己35多年来的丰富经验所培养起来的专门知识充满自信。

1 Unloading 卸货

- Container trucks 集装箱货车
- Crane works 起重机作业
- Forklift 升降机作业



2 Raw materials 原料

- Heat-resistant steel 耐热钢材
- Nickel 镍
- High-speed steel 高速钢(HIGHS)
- Ultra-hard alloys 超硬合金



3 Pre-processing 前处理

- Cutting 切割
- Crushing 破碎
- Analysis 分析
- Sorting 筛选



4 Processes 加工

- Electrolysis 电解
- Sintering 焙烧
- Acid treatment 酸处理
- Sorting by specific gravity 比重筛选
- Discharging Electricity 放电



(Including subcontractors)
(包含加工公司)

5 Packing works 打包作业

- Measurement 计量
- Repacking 再装满
- Handling 捆扎



6 Shipment modes 包装形式

- Pallet 平板架堆积
- Drum 桶装
- Flexible container 灵活容器装
- Bundle 捆扎



7 Shipment 发货





1st Warehouse

Site area.....10,300m²
Total floor space.....6,830m²
Crane.....4cranes
Scales.....10
Radiation detector.....1unit
Forklift.....6forklifts
Crusher.....2
Truck scale(50 tons).....1unit
Compression packing machine.....1
Vehicles.....1
Indoor storage for Hazardous Materials
Facility for Hazardous and general Materials
Analysis equipment.....3
●Bench X-ray fluorescence diffractometer
(SII NanoTechnology)
●Portable component analyzer (NITON)

第一物流中心

占地面积.....10,300m²
建筑面积.....6,830m²
起重機.....4台
秤台.....10部
射线线探查机.....1台
叉车升降机.....6部
破碎机.....2部
卡车秤台(50t).....1台
车辆.....1部
压缩包装机.....1台
危险物品室内储存所
危险物品一般处理所
分析仪器.....3台
●桌面型荧光X光分析装置 (SII 纳米技术)
●携带型成分分析仪 (NITON)



Indoor storage for Hazardous Materials
Facility for Hazardous and general Materials
危险物品室内储存所・危险物品一般处理所



Sales of rare metals and ferro-alloys

We are involved with all of raw materials physical trading business widely to all over the world including recovering and recycling.

稀有金属、铁合金的销售

在原料回收、再利用、销售等门类繁多的领域，整体后勤将全部完成。





2nd Warehouse

Site area.....12,772m²
 Total floor space.....6,581m²
 Crane3cranes
 Scales9
 Radiation detector1unit
 Forklift.....11forklifts
 Truck scale(50 tons).....1unit
 Compression packing machine1
 Constructive machine
 (so-called "YUNBO")1
 Automated Warehouse4unit
 Vehicles1
 Plasma cutting machine2
 Analysis equipment.....7
 ●Bench X-ray fluorescence diffractometer
 (SII NanoTechnology)
 ●Portable component analyzer
 (NITON·Innov-X)



Solar photovoltaic system 太阳光发电系统

第二物流中心

占地面积12,772m²
 建筑面积6,581m²
 起重机3台
 秤台9部
 射线线探查机1台
 叉车升降机11部
 卡车秤台(50t)1台
 压缩包装机1部
 建设用机械(液压挖掘机)1台
 自动仓库4台
 车辆1部
 等离子体切除机2台
 分析仪器7台
 ●桌面型荧光X光分析装置(SII纳米技术)
 ●携带型成分分析仪(NITON·Innov-X)



Automatic warehousing system 自动仓库系统



Radiation detector 射线线探查机



Plasma cutting machine 等离子体切除机



Industrial waste place 工业上的废物存放处



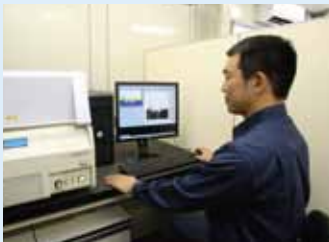


Tokyo Branch

Site area1,806m²
Total floor space.....1,044m²
Scales3
Forklift.....3forklifts
Compression packing machine1
Plasma cutting machine1
Analysis equipment3
●Bench X-ray fluorescence diffractometer (SII NanoTechnology)
●Portable component analyzer (NITON·INNOV-X)

东京营业所

占地面积1,806m²
建筑面积1,044m²
秤台3部
叉车升降机3部
压缩包装机1台
等离子体切除机1台
分析仪器3台
●桌面型荧光X光分析装置 (SII纳米技术)
●携带型成分分析仪 (NITON·Innov-X)



Head Office

总公司

Sensing social changes as soon as they happen.

Head office is the central hub for exchanging information.
Its motto is: prompt action and flexible idea.

最先察觉社会变化——。

努力成为一个信息收发中枢数据库的总公司。
快速对应和灵活的方式是一切的基础。



Entrance 入口



Reception room 接待室



本社ビル



Meeting room 会议室



Office 营业楼层



Meeting room 会议室



Meeting Corner 谈话室

Products Handled 经营品目

Metals 金属原料	
Nickel 镍	Nickel cathodes, Nickel briquettes, Nickel ball, Ni powder 镍阴极、镍坏块、镍粒、镍粒
Cobalt 钴	Cobalt cathodes, Cobalt granules, Cobalt briquettes, Cobalt powder 钴粉、钴细粒、钴坏块、钴阴极
Chrome 铬	Electrolytic, Chrome, Thermic Chrome 电解铬、铝热铬
Manganese 锰	Electrolytic manganese 电解锰
Tin 锡(Sn)	Tin ingot 锡锭
Cadmium 镉(Cd)	Cadmium stick, Remelted Cadmium 镉棒、再生金属镉
Antimony 锑(Sb)	Antimony ingot 锑锭
Bismuth 铋(Bi)	Bismuth ingot, Bismuth shot 铋锭、铋粒
Mercury 汞(Hg)	Refined Mercury 精制汞
Tungsten 钨	Tungsten bar, Tungsten powder 钨条、钨粉
Molybdenum 钼	Molybdenum bar, Molybdenum briquettes, Molybdenum powder 钼条、钼坏块、钼粉
Titanium 钛(Ti)	Sponge Titanium 海绵钛
Tantalum 钽(Ta)	Tantalum bar, Tantalum powder 钽条、钽粉
Silicon 硅(Si)	Silicon ingot(For industrial use) 硅块(工业用)
Precious metal 贵金属	Gold, Silver, Indium, Palladium, Rhodium 金、银、钯、铂

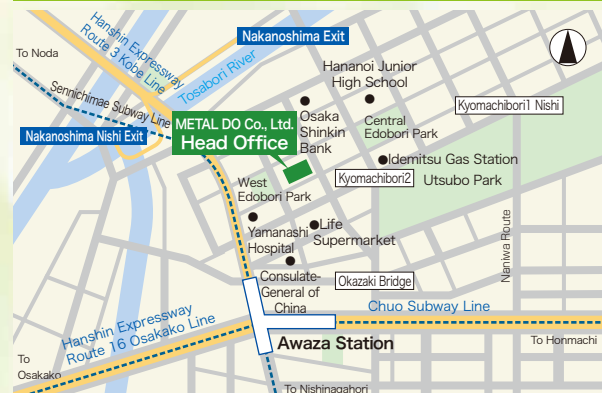
Ferro & Oxide 铁合金和氧化物产品	
Ferro alloy 铁合金	Ferro Nickel, Ferro Chrome, Ferro Molybdenum, Ferro TungstenFerro Titanium, Ferro Vanadium, Ferro Niobium 镍铁、铬铁、钼铁、钨铁、钛铁、钒铁、铌铁
Oxide 氧化物	Nickel Oxide, Cobalt Oxide, Molybdenum Oxide, Tungsten Oxide,Tantalum Oxide 氧化镍、氧化钴、氧化钼、氧化钨、氧化钽

Scrap & Secondary 废料・再生品	
Ni-Fe-Cr bearing 镍、铁、铬系	Pure Nickel, Incoloy, Inconel, Inver, Nichrome, A-286, NAL-AAlloy42, Carpenter, Chromel, Discaloy, Hastelloy, HyMu80, In alloy, Niresist, Ni-Span, Permalloy, Rene, Timken, Stainless andHeat-Resistant Steels(HH, HK, HS, HP, HT, etc) Bimetals, Trimetals, Rechargeable Battery(Ni-MH, Ni-Cd, Ni Oxide) etc 各种纯镍、各种因科洛伊合金、各种英科耐尔合金、铁镍合金、各种镍铬合金、A-286、Nar-A、合金42、各种卡彭特合金、各种克罗梅尔镍铬耐热合金、Discaloy合金、各种哈氏合金、海穆80、各种铜合金、各种耐蚀镍合金、Ni-Span、各种坡莫合金、各种雷内镍基高温耐蚀合金、各种蒂姆肯镍铬钼耐热合金、各种耐热钢 (HH、HK、HS、HP、HT等)、双金属、各种三层金属合金、各种充电电池 (Ni-MH型、镍镉型、氧化镍型) 等
Ni-Co bearing 镍、钴系	Kover, Maraging, Magnets , Multimet, Stellite(HS), Permendur, Remendur, Waspalloy, Udimet, Nimonic, Umco, M-8B, Rechargeable Battery(Li-ion Battery) etc 可伐合金、各种马氏体时效钢、各种磁钢、各种钴镍钴系磁钢、Multimet、各种司太立合金(各种HS)、坡阴德合金、铁钴钒合金、各种Waspalloy合金、各种镍基高温合金、各种尼孟合金、各种钴基合金、各种Tomi alloy合金、M-8B、各种充电电池 (钴锂离子电池) 等
Ni-Cu bearing 镍、铜系	Monel, Cupro(White Copper), German Silver, Eureka, Constantan, etc 各种蒙乃尔合金、各种Cupro(白铜)、各种德国银、尤利卡高电阻镍铜合金、康铜等
W bearing 钨系	Pure Tungsten, Cemented Carbide, Heavy Metal, Copper Tungsten, Die Steel, High Speed Steel, etc 纯钨、超硬合金、重金属、铜钨、高速钢、模具钢、高速工具钢等
Mo bearing 钼系	Pure Molybdenum, Thermal sprayed scraps, Target, etc 纯钼、热喷涂粉末、靶材等
Ta bearing 钽系	Tantalum for condenser, Crucible, Target, and other shapes 电容器材料、炉材、靶材、形变合金等
Cr 铬系	Target 靶材
Zr bearing 锆系	Zirconium, Zircaloy, Crystal Bar 锆、锆锡合金702、锆锡合金705
Ti bearing 钛系	Pure Titanium, Titanium alloys, Off grade-sponge Titanium, etc 各种纯钛、各种合金钛、等外品海绵钛等
Precious metal 贵金属	Gold, Silver, Platinum, Palladium, Indium, and others 金、银、白金、钯、铜等
Secondary recycle 再生循环品	Nickel bearing, Copper bearing, Titanium bearing, Stainless in form of Bar, Wire, Pipe, Seam/Seamless pipes, Outstocks, Secondary 镍系合金、铜系合金、钛系、不锈钢系 (板、条、丝、管、线、焊条等尺寸不齐的产品、剩余品、二等品、不符合标准的产品)



Access 交通

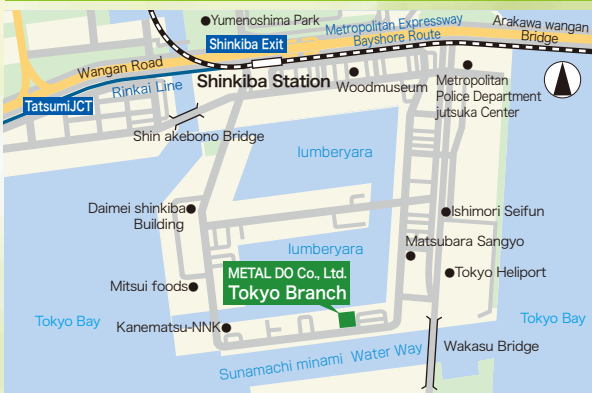
Head Office 总公司



Location 3-5-6 Kyomachibori, Nishi-ku, Osaka 550-0003
Phone 06-6448-5151 050-5507-1393(IP)
Fax 06-6448-5757 050-5525-6871 (IP)
Access ● Three minutes on foot from exit number 9 of Awaza station on the Sennichimae subway line
● Three minutes on foot from exit number 3 of Awaza station on the Chuo subway line

地 址: 〒550-0003 大阪府大阪市西区京町堀3丁目5番6号
电 话: 06-6448-5151 050-5507-1393(IP)
传 真: 06-6448-5757 050-5525-6871 (IP)
交 通: ●从地铁千日前线“阿波座站”9号出口步行3分钟
●从地铁中央线“阿波座站”1号出口步行3分钟

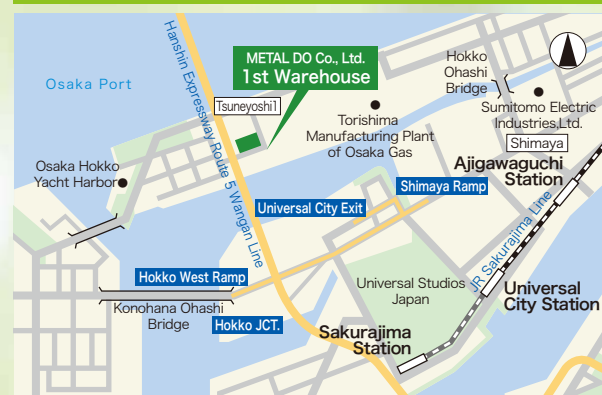
Tokyo Branch·Tokyo Warehouse 东京营业所·东京物流中心



Location 3-4-12 Shinkiba, Koto-ku, Tokyo, 136-0082
Phone 03-3522-5658 050-5531-0809 (IP)
Fax 03-5569-5522 050-5531-0810 (IP)
Access ● Get off at Tokyo Metro Yurakucho line/JR East Keiyo line/Tokyo Waterfront Area Rapid Transit Shin-Kiba Station
● Take Toei Bus Shin-Kiba Loop line (9 minutes), get off at Shin-Kiba 3-chome, walk 5 minutes
● 5 minutes from Shin-Kiba exit of Metropolitan Expressway Bayshore Route

地 址: 〒136-0082 东京都江东区新木场3丁目4番12号
电 话: 03-3522-5658 050-5531-0809 (IP)
传 真: 03-5569-5522 050-5531-0810 (IP)
交 通: ●乘坐东京地铁有乐町线、JR东日本京滨线、东京临海高速铁道，到“新木场站”下车
●都营公交 乘坐新木场循环公交(9分钟)，到“新木场三丁目”下车，步行5分钟
●首都高速湾岸线 从新木场出入口开车5分钟

1st Warehouse 第一物流中心



Location 1-1-76 Tsuneyoshi, Konohana-ku, Osaka 554-0052
Phone 06-6462-5851 050-5507-1395(IP)
Fax 06-6462-5855 050-5525-6872(IP)
Access ● 5 minutes from Hokko West Exit or Shimaya Exit on Hanshin Expressway Wangan Line

地 址: 〒554-0052 大阪府大阪市此花区常吉1丁目1番76号
电 话: 06-6462-5851 050-5507-1395(IP)
传 真: 06-6462-5855 050-5525-6872(IP)
交 通: ●从阪神高速湾岸线北港西出口驾车5分钟或从岛屋出口驾车5分钟

2nd Warehouse 第二物流中心



Location 3-5-4 minatojima minamimachi, chuo-ku, kobe, Hyogo, 650-0047
Phone 078-306-1108 050-5531-4782 (IP)
Fax 078-306-1105 050-5531-4783 (IP)

Access ● HANSHIN EXPRESSWAY KOBE LINE
Head for Port Island at Ikutagawa IC from Osaka or at Kyobashi IC from Himeji.
● HANSHIN EXPRESSWAY WANGAN LINE
Head for Port Island from Uozaki JC passing Kobe Harbor Highway.
● From SANNOMIYA JR or local railways
Please get on Port Liner (to the Kobe Airport) and get off at Shimin Hiroba Station (8 minutes by walk)
Please use taxi or subway or local bus from SHIN-KOBE station to SANNOMIYA station when you arrived by Shinkansen

地 址: 〒650-0047 兵库县神戸市中央区港岛南町3丁目5番4
电 话: 078-306-1108 050-5531-4782 (IP)
传 真: 078-306-1105 050-5531-4783 (IP)
交 通: ●阪神高速神戸线
从大阪方面来时从生田川高速公路出入口，从姬路方面来时从京桥高速公路出入口下来后前往港湾人工岛(Port Island)方向
●阪神高速湾岸线
从鱼崎高速公路出入口经过港湾干线道路(Harbor Highway)，前往港湾人工岛(Port Island)方向
●在JR或各私铁的三宫站下车
换乘Port Liner(神戸机场方向)，在市民广场站下车后步行8分钟
乘坐新干线时，在新神戸站换乘地铁、市内巴士或出租车前往三宫站。





Overview & History

Overview

Company name	METALDO CO., LTD.		
Representative	President Toshihiko Yamatsura		
Founded	April 1962		
Established	August 1979		
Capital	98 million yen		
Bord of Directors	President	Toshihiko Yamatsura	
	Director	Kazuo Taniguchi	
	Director	Shunsuke Katayama	
	Director	Tetsuhisa Okuda	
	Director	Tomohiro Matsuo	
	Auditor	Toshio Tojima	
	Adviser	Tsunaaki Oyama	
	Counselor	Kunihiro Fujita	
Location	■Head Office		
	3-5-6 Kyomachibori, Nishi-ku, Osaka 550-0003		
	Phone 06-6448-5151 FAX 06-6448-5757		
	Phone 050-5507-1393(IP) FAX 050-5525-6871 (IP)		
	■1st Warehouse		
	1-1-76 Tsuneyoshi, Konohana-ku, Osaka 554-0052		
	Phone 06-6462-5851 FAX 06-6462-5855		
	Phone 050-5507-1395(IP) FAX 050-5525-6872 (IP)		
	■2nd Warehouse		
	3-5-4 minatojima minamimachi, chuo-ku, kobe, Hyogo, 650-0047		
Description of business	Phone 078-306-1108 FAX 078-306-1105		
	Phone 050-5531-4782(IP) FAX 050-5531-4783 (IP)		
	■Tokyo Branch Tokyo Warehouse		
	4-12, SHINKIBA, 3-CHOME KOTO-KU TOKYO 136-0082		
	Phone 03-3522-5658 FAX 03-5569-5522		
	Phone 050-5531-0809(IP) FAX 050-5531-0810 (IP)		
	Sales of nonferrous metals, ferro-alloys, rare-earth, and recover, recycle of rare metals, super alloys and other metallic resources in the all over the world.		
	Number of employees		
	55 employees (May 1, 2013)		
	Banks of account		
Number of employees	Mizuho Bank, Ltd.		
	Mitsubishi Tokyo UFJ Bank, Ltd.		
	The Senshu Ikeda Bank, Ltd		
	Bank of Nagoya, Ltd.		
	Japan Finance Corporation (JFC)		
Banks of account	Shoko Chukin Bank, Ltd.		

概要

商号

法人代表

创业日期

设立日期

资本金

董 事

株式会社 METALDO

总 经 理 山颊敏彦

1962年4月

1979年8月

9,800万日元

总 经 理 山颊敏彦

董 事 谷口和夫

董 事 片山俊介

董 事 奥田哲久

董 事 松尾友宽

监 理 户岛利夫

顾 问 大山纲明

咨询委员 藤田国广

所在地

■总公司:

〒550-0003 大阪府大阪市西区京町堀
3丁目5番6号

电话 06-6448-5151 传真 06-6448-5757

电话 050-5507-1393(IP) 传真 050-5525-6871(IP)

■第一物流中心:

〒554-0052 大阪府大阪市此花常吉
1丁目1番76号

电话 06-6462-5851 传真 06-6462-5855

电话 050-5507-1395(IP) 传真 050-5525-6872(IP)

■第二物流中心:

〒650-0047 兵库县神户市中央区港岛南町
3丁目5番4

电话 078-306-1108 传真 078-306-1105

电话 050-5531-4782(IP) 传真 050-5531-4783(IP)

■东京分店 东京物流中心:

〒136-0082 东京都江东区新木场3丁目4番12号

电话 03-3522-5658 传真 03-5569-5522

电话 050-5531-0809(IP) 传真 050-5531-0810(IP)

营业概要

销售有色金属及铁合金、稀土元素；
稀有金属、超合金等金属资源的回收、
再利用、销售及该商品的贸易业务

员工人数

55名（截至2013年5月1日为止）

来往银行

MIZUHO银行
三菱东京UFJ银行
池田泉州银行
名古屋银行
日本政策金融公库
商工组合中央金库

History

1962 April	Founded as Kanji Wajima's private company.
1979 August	Restructured as Osaka Trading Co., Ltd., with a capital investment of 40 million yen.
1997 October	Opened the 1st Warehouse.
2001 January	Kunihiro Fujita appointed as company president.
September	Head office building completed.
2003 October	Acquired ISO14001 certification
December	Issued new-share subscription-rated bonds underwritten by the Osaka Small and Medium Business Investment & Consultation Corporation.
2004 February	Increased capital to 60 million yen.
2005 July	1st Warehouse completed (OSAKA)
2006 April	Establish Tokyo Branch
August	Corporate name was changed to METAL DO CO., LTD.
November	Increased capital to 67.25 million yen.
2007 April	Increased capital to 199.8 million yen.
May	Increased capital to 209.8 million yen.
2008 February	Increased capital to 262.968 million yen.
	Established general hazardous material facility and indoor hazardous material storage.
2009 January	2nd Warehouse completed. (KOBE)
2010 June	1st Warehouse permitted as Bonded Area
2011 September	Tokyo Branch opened (located to warehouse)
2011 November	Capital reduction to 98 million yen
2013 May	Toshihiko Yamatsura appointed as company president.

沿革

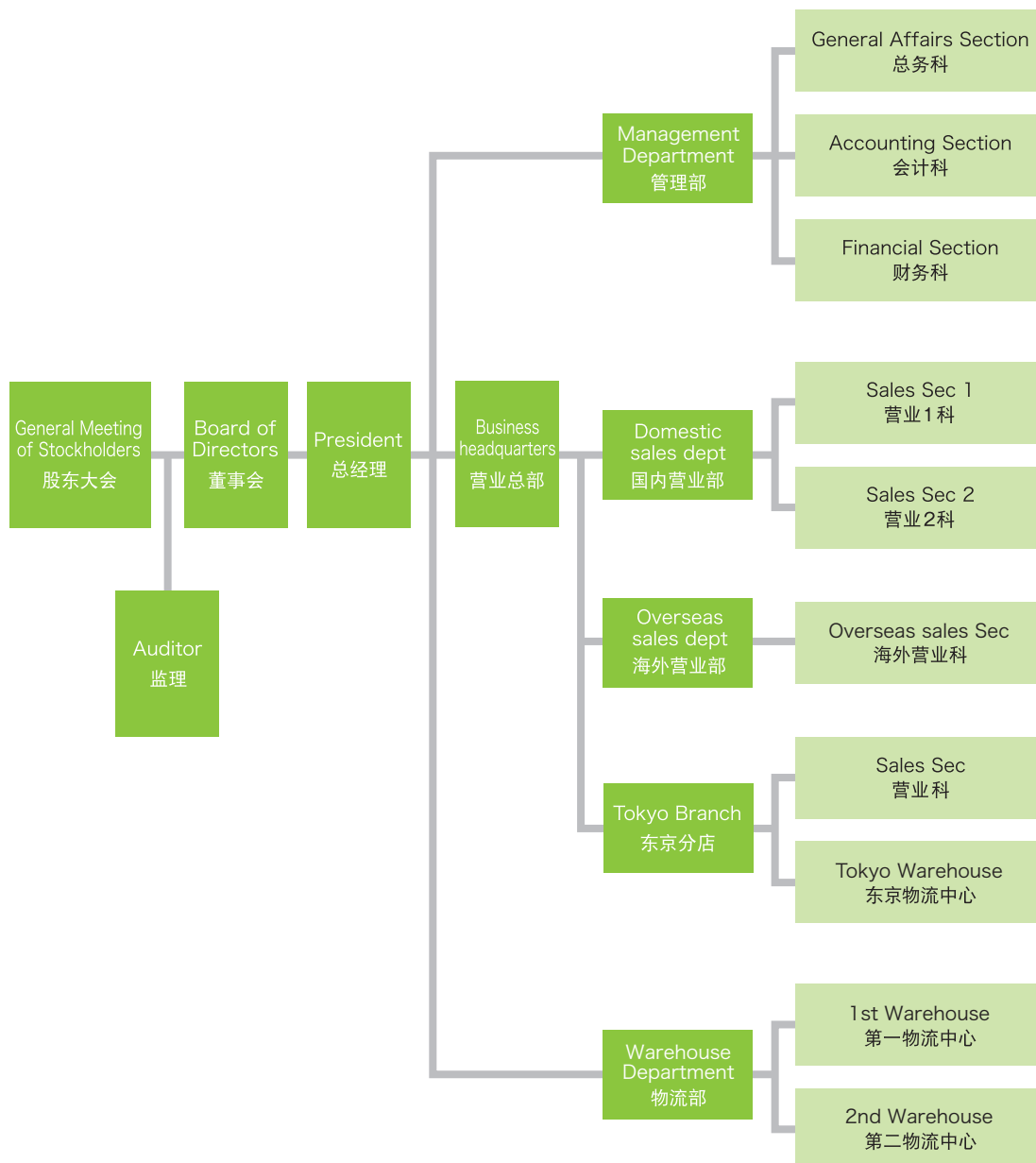
1962年 4月	和岛宽治以个人营业开始创业
1979年 8月	以资本金4千万日元改组为大阪商事株式会社
1997年 10月	开设第一物流中心
2001年 1月	藤田国广就任总经理
9月	建成总公司大楼
2003年 10月	取得ISO 14001认证
12月	由大阪中小企业投资育成株式会社社会社承办，发行新股认购估价企业债券
2004年 2月	资本金增加到6,000万日元
2005年 7月	建成第一物流中心(大阪市)
2006年 4月	开设东京营业所
8月	公司名称改为株式会社METAL DO
11月	资本金增加到6,725万日元
2007年 4月	资本金增加到19,980万日元
5月	资本金增加到20,980万日元
2008年 2月	资本金增加到26,296.8万日元
	在第一物流中心建成危险品室内储存所、危险品一般处理所
2009年 1月	建成第二物流中心(神户市)
2010年 6月	开设第一物流中心保税储存库
2011年 9月	开设东京分店(同时设立物流堆场)
2011年 11月	减少资本金到9,800万日元
2013年 5月	山颊敏彦就任总经理



Structure of organization & Association Memberships

Structure of organization

组织图



(May 1, 2013)
(截至2013年5月1日为止)

Association Memberships

加入团体

- Osaka Chamber of Commerce and Industry
- Battery Association of Japan
- Japan Titanium Society
- Tantalum-Niobium International Study Center
- Bureau of International Recycling
- Osaka Small and Medium Business Investment & Consultation Co.,Ltd
- Japan Tariff Association

- 大阪商工会议所
- 社团法人电池工业会
- 社团法人日本钛协会
- TIC(钽国际会议)
- BIR(国际回收局)
- 大阪中小企业投资扶植株式会社
- 财团法人日本关税协会